

# FENDT

## The Fendt Twister tedder







**A century of forage expertise**  
Tradition, innovation and passion – that's the recipe  
for success of the silage centre of expertise in Feucht.

## 360° sophistication. The Fendt Twister tedder.

Thanks to their innovative and well-designed technology, the Fendt Twister rotor tedders are dedicated specialists in fast and clean forage drying. They form the perfect link between mower and hay rake. More than a century of experience in forage harvesting reflected in every detail.





## The King of Twisters.

Power, stability, and gentle forage harvesting – the unrivalled combination of the Fendt Twister. Choose from between seven hitched and three trailed variants. But regardless of the model you choose, the Twister provides you with a reliable partner by your side during the silage and hay harvest.



## FENDT TWISTER IN GENERAL

# Flexibility and longevity: Standard in all Fendt Twisters.



### Frames for eternity

All Fendt Twisters have a large, thick-walled square frame. This ensures a long lifetime and excellent stability, as does the connection of individual rotors via sturdy frame joints, special flange bearings, and hardened bolts. The centre gearbox of the Fendt Twister is immersed in an oil bath and is protected against ingress of dust and dirt. The bearings on both ends provide for unparalleled smooth running.

### Direct drive

All drive components are safely protected against dust and dirt because of the closed design, and are lubricated with grease. A large hex shaft and self-centring crosspiece joints are efficient drivers of the rotors. The maintenance-free system has proven its worth on twisters a thousand times over, and features a direct, straight drive train. The system is also easily accessible and is therefore very maintenance friendly.

The large, thick-walled square frame can withstand tremendous loads, and guarantees a long lifetime.

### Setting in motion

Smart features which make the Fendt Twisters the efficient and well-designed machines that they are, can also be found on the rotors' wheels. They have been positioned so that there is only a small gap to the tines at the lowest point on the ground. This gives the Twisters excellent ground following, and prevents contamination of the forage. The wheels also have winding protection plates in the rims, which keep grass away from the rim.

Driving stability, ground following and trailing behaviour of the Fendt Twisters are enhanced by the patented push-pull system.



The hex shaft transfers the power directly and with little loss, and is protected against overload by a predetermined break point. It is protected against dirt by the closed design.



Thanks to the large feeler wheels, Fendt Twisters remain steady and stable even when working on slopes.





FENDT TWISTER: TINES/ROTORS/GROUND FOLLOWING

# Put your trust in tried and tested details.

### Stable carriers

The Fendt Twister tedder tine carriers are made from sturdy, galvanised spring steel strip. The tine arms and rotor plates are directly fitted and have an extra-wide contact area, in a force-fit connection. Rotor plates have a reinforced profile for even more stability and safety. The tine arm is flexible enough to handle any uneven ground, by absorbing the resulting force, so providing maximum protection to the tines and sward. The smooth tine carrier surface means that no forage becomes trapped.

### Guaranteed success with the best tines

Using the combing effect, the forage is deposited in two layers by the equal-sided tines with 6 flightings and a flighting diameter of 70 mm, and is therefore turned to perfection. This helps keep the forage clear of dirt. The lifetime is increased since the load on the tines is the same on both sides. The special Super C tines are thoroughly tested in a test cycle developed in-house with 200,000 impacts. The Super C quality characteristic guarantees the ultimate in quality and ensures a very long lifetime. Since the tines are equal-sized, there's no need to keep different spare parts and replacements. The tines are also fitted with an anti-tine loss device.

### Exceptional work and forage quality

Different areas of application demand different settings. On the Fendt Twister the spreading angle can be quickly and easily adjusted between 15, 18 and 21° in a hole template on the wheels. This makes it easy to switch between the three positions of the spreading angle and always reach the optimal work result. Even more evenly dried, your forage guarantees optimal forage pick-up and perfect mixing thanks to the large overlap of the rotors.

The 'Super C' tines are made from 9.5 thick heavy-duty steel, and are characterised by their long lifetime and exceptional results.



The tine carriers have an exceptionally wide, unbendable contact surface on the rotor plate.



Thanks to the closed design, the rotor heads of the Fendt Twisters are reliably protected against dust and dirt.



All 'Super C' tines come with protection against loss as standard to protect any following harvesters and animals.



The spreading angle can be quickly and easily adjusted between 15, 18 and 21° in a hole adjustment on the wheels.



FENDT TWISTER: THREE-POINT MOUNTING

# Blessed with talent, and in control in any situation.

**The all-rounder**

The Fendt Twisters can all be used with four, six, eight, or ten rotors in three-point mount. Working widths of up to 10.72 m are no problem. Fendt Twisters are however really compact in the transport position. The synchronous rotor lifting makes it much safer and easier to fold and open the rotors, even on slopes. The rotor speed can be reduced using the optional night swathing gearbox, to shape the perfect night swaths while ensuring excellent area coverage, and to protect the crop against moisture – perfect for small harvest time windows and heavy dew.

**Safety always comes as standard**

The automatic safety switch-off with integrated free wheel is the ultimate safety feature of the Fendt Twisters. This automatically and mechanically interrupts the powertrain as soon as the rotors are opened beyond the headland position. Damage to the drive train, as well as on maintenance-free crosspiece joints, are therefore effectively prevented. The hitched twisters from 8608 DN onwards have the security lock system as standard; this hydraulically controls the safety switch for the rotor drive for maximum safety.

**Perfect for field edges with the angle setting**

The perfect work pattern is achieved even on the edges of your meadows thanks to the standard edge spreading device. On models 431 DN and 601 DN, you can easily set the individual impellers on the rotors manually to bring them into the edge spreading position. The twister then trails at an angle behind the tractor, therefore reliably preventing forage from being spread beyond the field edge. Edge spreading is also performed on models 5204 DN to 8608 DN using the twister angle setting. On these models, you can however change all rotor wheel settings centrally and from the convenience of the cab. The switch to edge spreading can also be easily done hydraulically as an option. The hydraulic actuation can also be retrofitted at any time. A control unit is all that is needed on the tractor for actuation.

**Large-scale technology in the three-point mounting**

On the Twister 11010 DN, the edge spreading effect is not only achieved by trailing the twister at an angle, but through a hydraulically pivoted edge spreading cloth. Even on large hitched Twister tedders with working widths of 10.2 m and 12.7 m, an edge spreading cloth is used for edge spreading. Fitting your Twister 11010 DN with an edge spreading cloth, gives you the benefit of powerful technology used in hitched large-scale twisters.

		Twister 431 DN	Twister 601 DN	Twister 5204 DN	Twister 6606 DN	Twister 7706 DN	Twister 8608 DN	Twister 11010 DN
Working width	m	4,30	5,70	5,20	6,60	7,70	8,60	10,72
Rotor	Number	4	6	4	6	6	8	10
Tine arms per rotor	Number	6	5	6	6	6	6	6

Safety comes as standard in all Fendt Twisters: Thanks to the integrated safety switch, the traction is cut when folding the machine for transport.



The synchronised lifting ensures safety during folding when working on slopes.



A centre of gravity close to the tractor also has a noticeable effect on stability when on the roads.



Perfect results can also be achieved around the field edge thanks to an edge spreading device, around which the entire twister pivots.



On the top-of-the-range Twister 11010 DN, edge spreading is performed through an optional, hydraulically foldable edge spreading cloth.



The patented traction compression system ensures the best ground following and optimal trailing behaviour thanks to the low towing point.



FENDT TWISTER CHASSIS VERSION

# Manoeuvrability for maximum efficiency.

**Manoeuvrability is the key**

The Fendt Twister with transport chassis turns easily due to its 8 to 10 rotors and a working width of up to 12.7 m, and is also efficient thanks to its manoeuvrability and the smart details. It begins with the smooth closing and opening of the rotor arms, which are stored in Y-shaped brackets without loading. The wide track and wide tyres of the twister ensure a smooth ride, and with 40 km/h maximum transport speed, you'll be at the next job in no time. The large transport wheels, which also act as feeler wheels, allow good ground following.

**Hydraulically secured**

The unique Security Lock System (SLS) is a reliable safety feature. If the rotors accidentally fold up while it is still running, the hydraulically-activated system will cut the power. The system also automatically positions the rotor, and centres itself when lifting.

**Easy adjustment**

The operating height of the rotors can be easily set without tools using the crank on the frame, and can therefore react to changing conditions quickly and easily.

The hydraulic Security Lock System (SLS) offers reliable protection against damage to the Fendt Twister drive train when folding into the transport position.



Thanks to large volume transport tyres, the tedder is safe to drive on public roads at a speed of 40 km/h.



The ultimate in area coverage and top quality forage: The trailed Fendt Twisters achieve their efficiency not only through the operating width, but also through manoeuvrability on headlands.

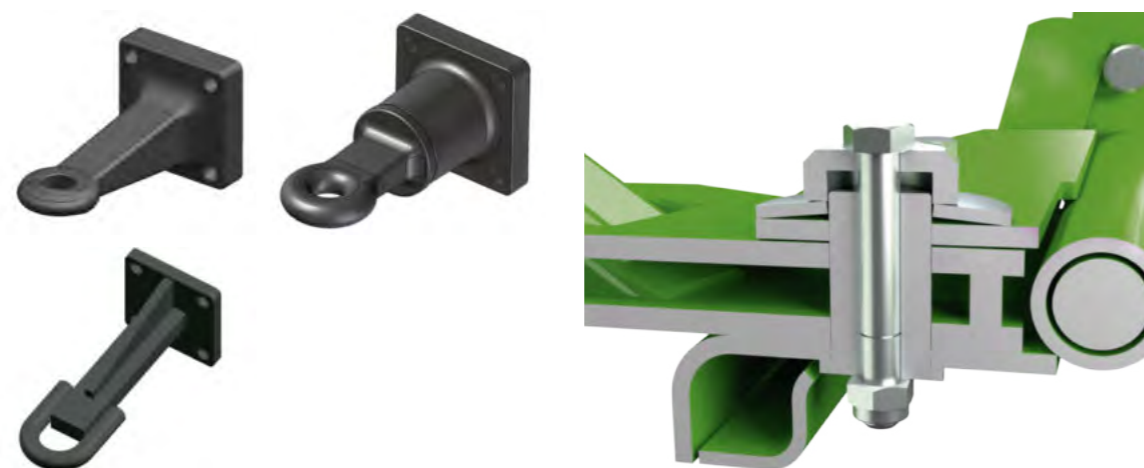
The operating height is easy to adjust using the handy, centrally-located manual crank.

		Twister 901 T	Twister 11008 T	Twister 13010 T
Working width	m	8,60	10,20	12,70
Rotor	Number	8	8	10
Tine arms per rotor	Number	6	6	6



THE FENDT TWISTER TEDDER

# Special equipment.



□ Whether a rigid or pivoting drawbar eye or hitch hook – the Fendt Twister gives you the choice. (Fendt Twister 11008 T and 13010 T)

■ On all Fendt Twisters in a three-point mounting, the integrated, adjustable pendular brake stops the twister from rocking. The Fendt Twister 11010 DN is also equipped with a reinforced pendulum brake.



■ The Twister hoop guards, which are equipped with long-life bearings, fit perfectly into the special v-shaped brackets on the frame. (Only on Fendt Twister chassis version.)



□ The optional mobile feeler wheels optimise the ground tracking, and ensure clean raking and sward protection. (Fendt Twister 901 T)







## FENDT SERVICES

# The best product with the best care and service.

With a Fendt Twister, you get a high-tech product that will overcome the toughest of challenges. That's why you can expect that little bit extra when it comes to services from highly-efficient, certified Fendt dealers:

- Fast lines of communication between you and our trained service team.
- 24/7 availability of replacement parts throughout the season
- 12-month warranty on Fendt original parts and their fitting

**100% quality. 100% service: Fendt Services**  
We offer outstanding services to offer you the best possible reliability of use and efficiency from your Fendt Machine:

- Fendt Demo service
- AGCO Finance - finance deals



+44 330 123 9909

Your Fendt dealers are always there when you need them, and have just one aim – to make sure your Fendt machines are ready for action at any time. If something does go wrong during harvest time, simply call your certified service centre 24/7 on the emergency hotline.



Standard and optional equipment  
 Standard: ■  
 Optional: □

THE FENDT TWISTER TEDDER

# Equipment variants and technical details.



		Twister 431 DN	Twister 601 DN	Twister 5204 DN	Twister 6606 DN	Twister 7706 DN	Twister 8608 DN	Twister 11010 DN
<b>Weights and dimensions</b>								
Working width	m	4,30	5,70	5,20	6,60	7,70	8,60	10,70
Transport width	m	2,44	2,55	3,00	2,90	3,00	2,90	2,99
Parking height	m	2,36	3,00	2,60	3,30	3,65	3,30	3,75
Transport length	m	1,88	2,10	2,25	2,10	2,45	2,25	2,25
Weight	kg	385	498	606	822	946	1172	1535
<b>Power requirement</b>								
Power requirement	kW/HP	22/30	25/34	22/30	30/41	60/82	70/95	88/120
<b>Hitching</b>								
Three-point	category	I + II	I + II	I + II	I + II	I + II	I + II	II + III
Two-point lower links	category							
Drawbar eye								
<b>Additional equipment / rotor</b>								
Rotor	number	4	6	4	6	6	8	10
Tine arms per rotor	number	6	5	6	6	6	6	6
Anti-tine loss protective device		□	□	■	■	■	■	■
Mechanical edge spreading device		■	■	■	■	■	■	■
Hydraulic edge spreading device				□	□	□	□	□
Spread angle adjustment		■	■	■	■	■	■	■
Overload protection		■	■	■	■	■	■	■
Pendular brake		■	■	■	■	■	■	■
Night-swath gearbox				□	□	□	□	□
<b>Hydraulics</b>								
Required hydraulic connections	number						1*	1*
KENNFIXX® hydraulic connections							■	■
<b>Tyres</b>								
Rotor chassis tyres		4 x 15/6.00-6	6 x 15/6.00-6	4 x 16/6.50-8	6 x 16/6.50-8	6 x 16/6.50-8	6 x 16/6.50-8; 2 x 18.5/8.50-8	8 x 16/6.50-8; 2 x 18.5/8.50-8
Transport chassis tyres								
<b>Lighting</b>								
Lighting		□	□	□	□	□	□	■
Warning signs		■	■	■	■	■	■	■

	Twister 901 T	Twister 11008 T	Twister 13010 T
Working width	8,60	10,20	12,70
Transport width	3,00	2,94	2,94
Parking height	2,90	2,56	2,56
Transport length	4,40	5,70	5,70
Weight	1660	1860	2160
<b>Power requirement</b>			
Power requirement	40/54	40/54	66/90
<b>Hitching</b>			
Three-point	II		
Two-point lower links		■	■
Drawbar eye			
<b>Additional equipment / rotor</b>			
Rotor	8	8	10
Tine arms per rotor	6	6	6
Anti-tine loss protective device	■	■	■
Mechanical edge spreading device	■	□	□
Hydraulic edge spreading device	□	□	□
Spread angle adjustment	■	■	■
Overload protection	■	■	■
Pendular brake			
Night-swath gearbox	□	□	□
<b>Hydraulics</b>			
Required hydraulic connections	1*	1*	1*
KENNFIXX® hydraulic connections	■	■	■
<b>Tyres</b>			
Rotor chassis tyres	6 x 16/6.50-8; 2 x 18.5/8.50-8	6 x 16/6.50-8; 2 x 18.5/8.50-8	8 x 16/6.50-8; 2 x 18.5/8.50-8
Transport chassis tyres	10.0/80-12	10.0/75-15.3	10.0/75-15.3
<b>Lighting</b>			
Lighting	■	■	■
Warning signs	■	■	■

FAQS. EVERYTHING ABOUT FENDT.

# What can we do for you?

**What does the Fendt Service feature?**

For us, service means knowing and understanding your work in order to meet your demands for reliability and safety and to act in your economic interest. We stand behind our products and have developed them for the highest demands and long-term operation. Our service is the partnership aspect for your work.

**What does Fendt Full Line stand for?**

In addition to leading tractors and harvesters, we now also offer our customers forage harvesting machinery to Fendt quality standards. We now offer a full agricultural machinery portfolio, including Fendt's top service, all from one trusted source.

**Which products does Fendt Forage Harvesting encompass?**

Fendt Forage Harvesting comprises high-quality rotary hay rakes (Fendt Former), hay rakes (Fendt Twister; Fendt Lotus), drum mowers (Fendt Cutter) as well as disc mowers (Fendt Slicer), loading wagons (Fendt Tigo), balers (Fendt round balers and square balers), and forage harvesters (Fendt Katana). All implements are perfectly matched to the Fendt tractors and are just as convincing in combination with third-party tractors.

**Where does Fendt forage harvesting equipment come from?**

Fendt mowers, twister, and hay rakes are built at the AGCO Centre of Excellence for forage harvesting technology in Feucht (Germany). It is one of six German locations and has been successful in the field of innovative agricultural machinery for more than 100 years.

# Contact Fendt.

**fendt.com**

Find everything online – from brochures to technical specifications, from reports about customers or our company to our Fendt event calendar.

**Fendt Configurator**

With the Fendt Configurator, you can choose from all the available equipment variants and put together the optimally equipped machine for your farm. The Fendt Configurator is available online at [www.fendt.com](http://www.fendt.com), where you will find a quick link to it directly on the start page.

**fendt.tv**

Fendt around the clock – our Fendt Media Library makes it possible. Our internet TV provides you with news and information about Fendt 24/7.

**facebook.com/FendtGlobal**

Follow us on Facebook and find out what's new in the Fendt world. Come have a look!

**instagram.com/fendt.global**

Follow us on Instagram and become a Fendt fan. Fascinating articles on Fendt are waiting for you there.

DN = Three-point headstock with trailing device / T = Transport chassis / \* = Float position required / Number of required hydraulic connections may vary depending on the additional equipment



# FENDT

It's Fendt. Because we understand Agriculture.



[www.fendt.com](http://www.fendt.com)

AGCO GmbH – Fendt Marketing  
87616 Marktberdorf, Germany

 **AGCO**  
Your Agriculture Company

Fendt is a worldwide brand of AGCO.  
All details regarding scope of delivery, appearance, performance, dimensions and weights, fuel consumption and running costs of vehicles reflect the latest information available at the time of print. These may change by the time of purchase. Your Fendt dealer will be happy to inform you about any changes. The vehicles shown do not feature country-specific equipment.